

# BFT LIME PLASTER

*Breathable • Sustainable • Handcrafted*



# **BFT Lime Surface vs Paint**

Beyond colour—experience a finish that enhances aesthetics, improves wall performance, and ages beautifully.

<b>BFT LIME SURFACE</b>	<b>PAINT</b>
<b>Natural depth &amp; movement</b>	<b>Flat appearance</b>
<b>Breathable</b>	<b>Can trap moisture</b>
<b>Handcrafted finish</b>	<b>Artificial look</b>
<b>Ages gracefully</b>	<b>Repaint every few years</b>
<b>Mineral based</b>	<b>Chemical based</b>



**BUILT FOR BEAUTY. MADE TO LAST.**

# TECHNICAL COMPOSITION

Comprehensive product data for architects, designers, and contractors.

<b>Product Type</b>	Mineral Lime Plaster Finish
<b>Composition</b>	Lime, Minerals, Natural Additives
<b>Finish Options</b>	Rough Finish   Smooth Finish
<b>System Thickness</b>	1.5mm
<b>Coverage</b>	5-6 sft/kg/2coats
<b>No. of Coats</b>	2 Coats (Recommended)
<b>Drying Time</b>	24-48 hours between coats
<b>Full Cure</b>	2-3 days
<b>VOC Content</b>	Low VOC
<b>Water Vapour Permeability</b>	High (Breathable)
<b>Application Method</b>	Trowel/Float
<b>Maintenance</b>	Clean with soft cloth & water. Avoid acidic cleaners.

*\*NOTE: Coverage depends on surface condition and application.*



EXTREMELY  
DURABLE



BACTERIA AND  
MOLD RESISTANT



PURIFIES AIR



UV SAFE



EXTREMELY  
BREATHABLE



SELFHEAL  
THE CRACKS

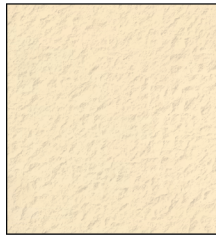


ABSORBS  
MOISTURE

# COLOUR SHADES: ROUGH FINISH



Pale Sable S-2758P



Cane Sugar S-2780P



Adobe S-2081T



Suede Tan S-2759T



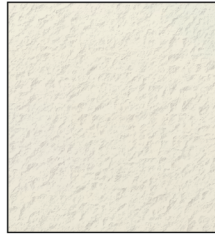
Sequoia Brown S-2769D



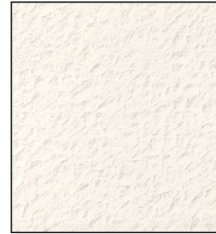
Sun Tea S-2832D



Moon & Stars S-2954P



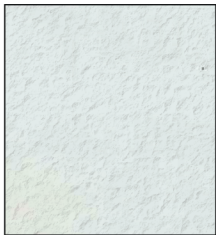
Desert Sand S-2757P



White On White S-3002P



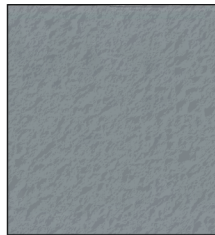
Overcast S-2947P



Smoky Silhouette S-2955P



Monday S-2949T



Venetian S-2950D



Night Moves S-2958D



Black Pitch S-2959C



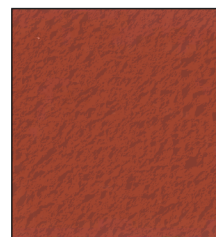
Cinnamon Sugar S-2165T



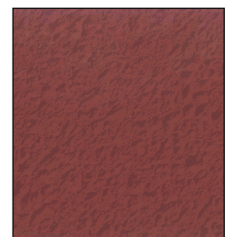
Irish Coffee S-2166D



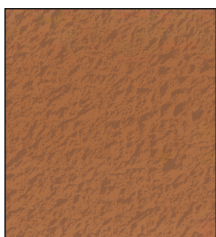
Creole S-2167D



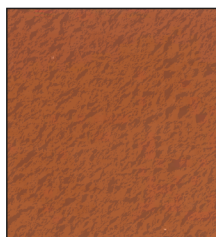
Burnt Brick S-2147C



Chocolate Delight S-2168C



Cinnamon Tea S-2084C



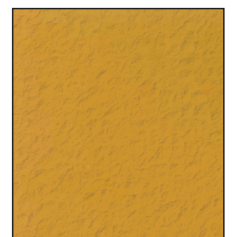
Amber Brown S-2105C



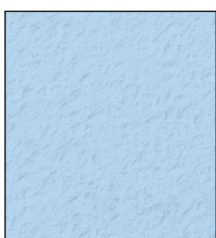
Egg Custard S-2032T



Ra Gold S-2042C



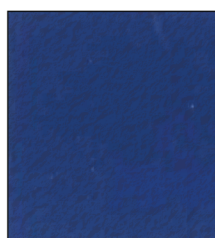
Tawny Lion S-2049C



Night Horizon S-2423P



Silence S-2426D



Skipper Blue S-2378C



Young Mermaid S-2608D



Garden Wall S-2609C

System Thickness: Approx. 1.5 mm

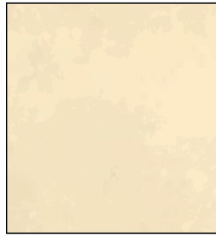
Coverage: Approx. 5-6 Sqft/Kg (Two coats)

Application : Interior & Exterior Areas

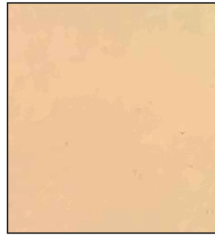
# COLOUR SHADES: SMOOTH FINISH



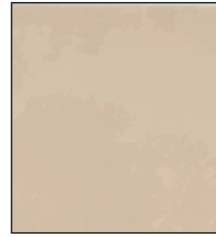
Pale Sable S-2758P



Cane Sugar S-2780P



Adobe S-2081T



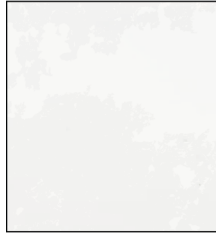
Suede Tan S-2759T



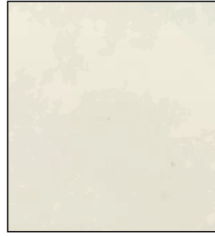
Sequoia Brown S-2769D



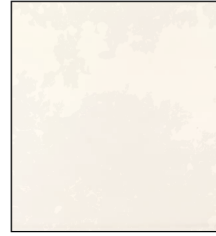
Sun Tea S-2832D



Moon & Stars S-2954P



Desert Sand S-2757P



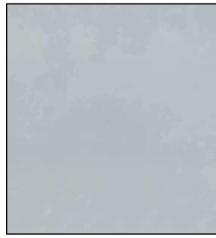
White On White S-3002P



Overcast S-2947P



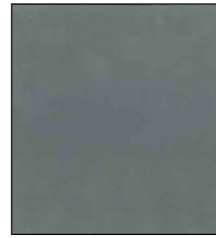
Smoky Silhouette S-2955P



Monday S-2949T



Venetian S-2950D



Night Moves S-2958D



Black Pitch S-2959C



Cinnamon Sugar S-2165T



Irish Coffee S-2166D



Creole S-2167D



Burnt Brick S-2147C



Chocolate Delight S-2168C



Cinnamon Tea S-2084C



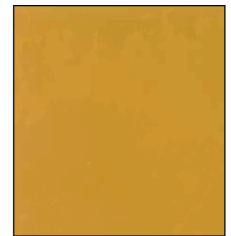
Amber Brown S-2105C



Egg Custard S-2032T



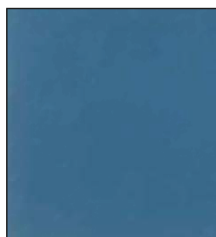
Ra Gold S-2042C



Tawny Lion S-2049C



Night Horizon S-2423P



Silence S-2426D



Skipper Blue S-2378C



Young Mermaid S-2608D



Garden Wall S-2609C

TWO DISTINCT FINISHES. ONE PREMIUM SYSTEM.



Rough finish to exterior walls for residential site.



Smooth finish to interior walls of a luxury villa.



Modern living space in Bangalore enhanced with the Night Horizon shade.



A private residence with Smoky Silhouette shade used in the living area.



Elegant Suede Tan shade used for a cozy bedroom at a guest house.



## A CENTURY OF MAKING ARTISANAL TILES

With a reputation dating back for 100 years, Bharat Floorings & Tiles is considered a leader in custom-made cement floorings. Customers have trusted the brand's superior quality and welcomed the company into their daily lives, creating invaluable memories for generations of office and homeowners. Our commitment to handmade has created bespoke and unique products that can serve as cherished family heirlooms for years to come. Our cement tiles are made by hand, one at a time, using mineral pigments. After the tile is casted by the artisan, it is cured in water for a period of time, and then air dried before being shipped.



To create your story, drop into our showroom or visit us online.  
We have showrooms located in Mumbai | Delhi | Ahmedabad  
| Vadodara | Goa | Bengaluru | Hyderabad | Pune

Bharat Floorings & Tiles (Mumbai) Pvt Ltd.

32, Mumbai Samachar Marg, Next To BSE, Fort, Mumbai 400023

T: +91 22 40574400/23/44 | E: info@bharatfloorings.com

W: www.bharatfloorings.com | @ bharatfloorings | BharatFloors  
ISO 9001: 2015 Certified Company | Brochure Date: April, 2025

